

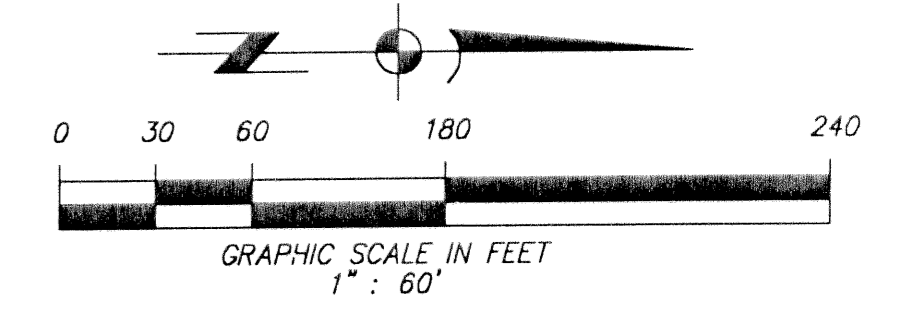
PARKWOOD ESTATES, P.U.D.

A REPLAT OF A PORTION OF LOT 8 AND THE WEST 1/2 OF LOT 9, BLOCK 1 AND THE ADJACENT 30' R/W, OF THE PALM BEACH FARMS CO. PLAT NO. 9 OF PARTS OF SECTIONS 27, 28, 29 AND 30, TOWNSHIP 43 SOUTH, RANGE 42 EAST, (P.B. 5, PG. 58 -P.B.C.R.) IN SECTION 30, TOWNSHIP 43 SOUTH, RANGE 42 EAST, PALM BEACH COUNTY, FLORIDA.

N.W. CORNER OF N.E. 1/4 OF SECTION 30-43-42 N 864182.414 E 819471.107 FND. PALM BEACH COUNTY MONUMENT WITH DISC

STATE OF FLORIDA COUNTY OF PALM BEACH This plat was filed for record at this day of 200... and duly recorded in Plat Book Pages through

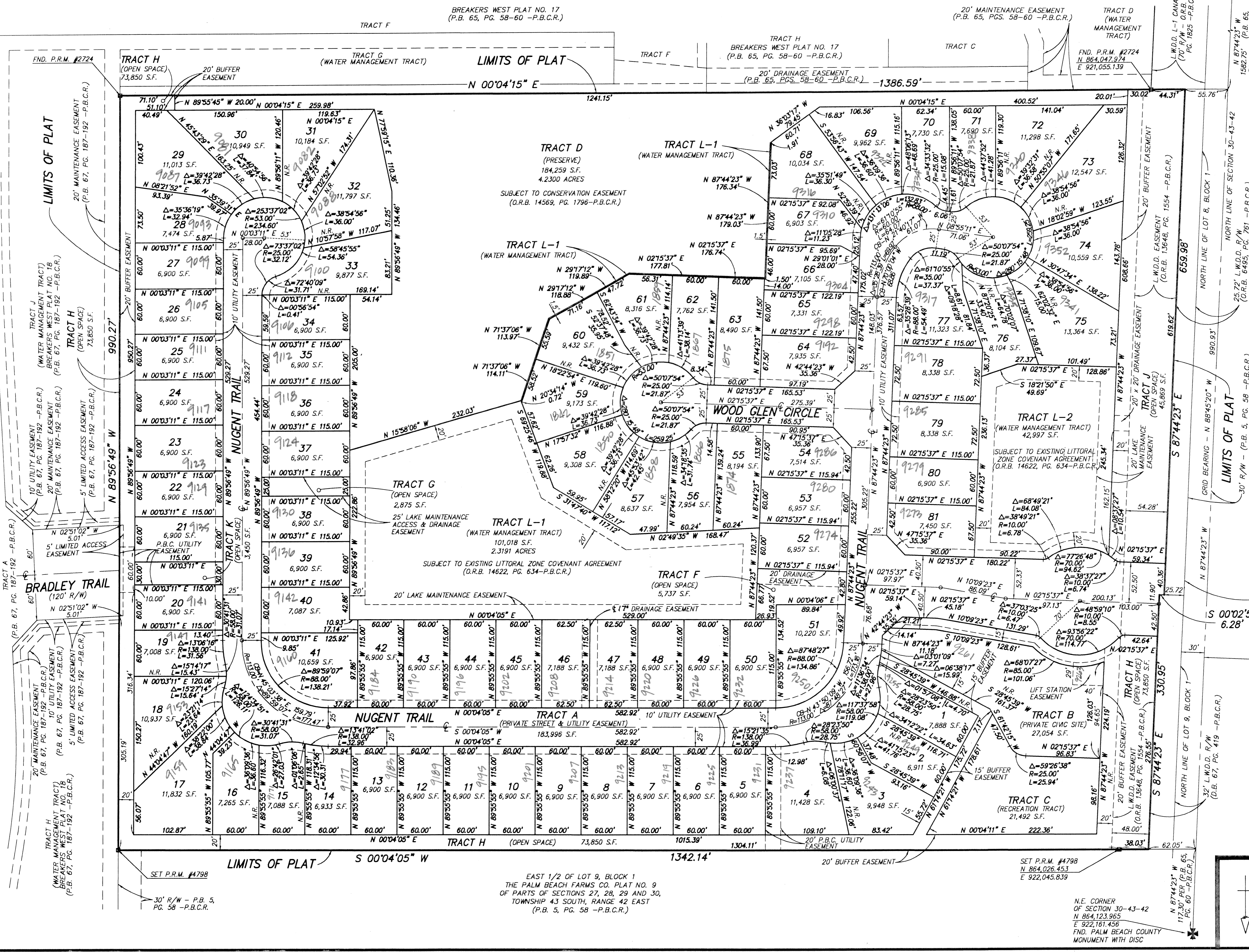
DOROTHY H. WILKEN Clerk Circuit Court By:



OKEECHOBEE BOULEVARD (STATE ROAD 704) (230' R/W PER F.O.O.T. R/W MAP SECTION 93280-2513, SHEETS B & 9 OF 22)

- ABBREVIATIONS
- ¢ CENTERLINE
 - D.B. DEED BOOK
 - FND. FOUND
 - L.W.D.D. LAKE WORTH DRAINAGE DISTRICT
 - O.R.B. OFFICIAL RECORDS BOOK
 - P.B. PLAT BOOK
 - P.B.C.R. PALM BEACH COUNTY RECORDS
 - P.C. PAGE
 - R/W RIGHT-OF-WAY
 - S.F. SQUARE FEET
 - P.R.M. PERMANENT REFERENCE MONUMENT
 - P.C.P. PERMANENT CONTROL POINT
 - N.R. NOT RADIAL
 - CB CHORD BEARING AND DISTANCE
 - F.D.O.T. FLORIDA DEPARTMENT OF TRANSPORTATION
 - P.U.D. PLANNED UNIT DEVELOPMENT
 - P.B.C. PALM BEACH COUNTY

PREPARED BY **Blinow & Rossi, Inc.** Land Surveying, Mapping and Consultant Services 10301 N.W. 50th Street, Suite 102 Sunrise, Florida 33351 Telephone No. (954) 749-4911



SUBDIVISION PARKWOOD ESTATES PUD
BOOK 46 PAGE 187
FLOOD ZONE B
ZONING PUD
QUAD # 46
SE
TAX # 17
PUD NAME

SET P.R.M. #4798
30' R/W - P.B. 5, PG. 58 -P.B.C.R.

EAST 1/2 OF LOT 9, BLOCK 1 THE PALM BEACH FARMS CO. PLAT NO. 9 OF PARTS OF SECTIONS 27, 28, 29 AND 30, TOWNSHIP 43 SOUTH, RANGE 42 EAST (P.B. 5, PG. 58 -P.B.C.R.)

SET P.R.M. #4798
N 864,026.453
E 922,045.839

N.E. CORNER OF SECTION 30-43-42 N 864123.955 E 922,161.456 FND. PALM BEACH COUNTY MONUMENT WITH DISC